

Ceetak Filter Seals



FILTER SEALS

Ceetak have launched a custom range of safety filtering screens which are primarily designed to protect critical fluid control equipment and components against possible contamination in Industrial and Automotive applications.

However effective the main "in line" filters are within an Industrial or Automotive system, there is always the possibility for small particles of contaminants to "beat" the system which could damage critical components.

For example, in the sensitive ABS braking module found in many passenger cars today.

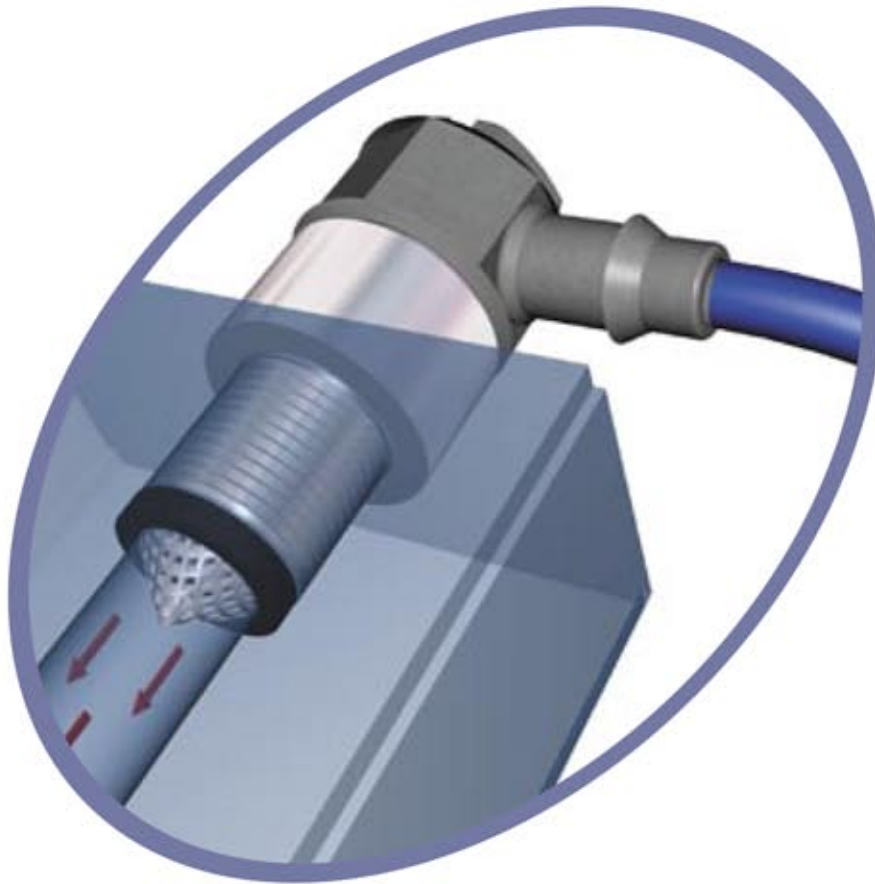
With these risks in mind, Ceetak developed their custom range of filter screens which are designed to provide an effective filtration barrier to protect air systems, fuel, hydraulic, lubrication and other critical fluids used in similar systems. The filter screens, which are constructed of a stainless steel woven wire mesh moulded together using a proprietary process. Filter screens can be situated close to critical components and require a minimum amount of space.

The filter screens can be supplied from as small as 10mm to 100mm in diameters (larger diameters to special order). Particulate filtration from as low as 5 Micron up to 100 Micron rating.

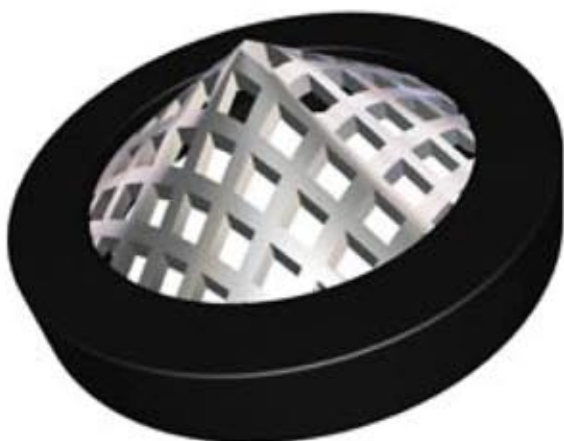
Benefits to the customer:

- Low cost Filtration
- Wide range of materials
- Easy to fit
- Conical design provides high flow
- Elastomeric seal on O/dia
- Low cost tooling





| Metric Sizes | Imperial Sizes | Filter Screen | Elastomer Materials | |
|--------------------------------------|----------------|-----------------------------|---------------------|--------------|
| 10 - 100mm | 1/8" - 4" | Stainless Steel 5 - 100µ | Nitrile | 60 - 90 SH A |
| | | | Fluorocarbon | 55 - 95 SH A |
| Other sizes available on request. | | Brass 5 - 100µ | Silicone | 40 - 80 SH A |
| | | | EPDM | 60 - 90 SH A |



Ceetak Ltd Head Office:
Fraser Road, Priory Business Park,
Bedford, MK44 3WH
Tel: 01234 832200
Fax: 01234 832299

Web: www.ceetak.com
Email: info@ceetak.com

Ceetak Aberdeen:
Block 1, Unit 13,
Souterhead Rd,
Altens Industrial Estate,
Aberdeen, AB12 3LF
Tel: 01224 249690
Fax: 01224 249691